

SWAN 66

The True Performance Cruiser



SWAN 66



Contents

The Yacht

FD Version

Deck and sail plan

Interiors

Technical Details

S Version

Deck and sail plan

Interiors

Technical Details

In its fifth decade, Swan remains the sailor's choice, the purist's benchmark. Each owner of the 2000 or so Swans ever built, as a member of Club Swan, is part of an extraordinary network of individuals, united by their passion for the experience of sailing. Throughout the world they will testify that these yachts are about luxury and capability – neither at the expense of the other – and, of course, safety.

The racing pedigree is well documented. Swan technology has consistently triumphed at the highest level from the outset. But the main motivation behind every Swan is to provide the best all-round sailing experience possible from the thrill on deck, to the ambience, space and cocooning comfort below.

It is all about detail. From the optimal hull construction and shape for performance and strength, to exquisite joinery and intelligent ergonomics, Swans are yachts for living to the full. The influences have been diverse. The Sparkman & Stephens design team were quick to establish Swan in the vanguard of yachting in the 1960s and 1970s. Through the 1980s, as lightweight, pure racers became fashionable, new designer German Frers remained true to the values of seaworthy construction and safety, practicality, luxury and impeccable hull lines. The 51 and then the 46, arguably the quintessential Swan, cemented Nautor's reputation for nimble performance, solidity and uncompromising comfort.

In 1998, Leonardo Ferragamo and a group of investors injected Italian glamour and took the brand on the next leg of its journey. Their influence assured Nautor of its place at the forefront of international sailing. Few would dispute that Swan yachts today represent the pinnacle of ocean-going performance, luxurious interiors and build quality in every detail.

Nautor's new hi-tech boatyard is the next chapter in Swan's remarkable story a story which started with the inaugural 36 and continues with the ambitious 131. Through revolutionary technology, this state-of-the-art facility promises to take the brand to new heights, and new horizons.



The 40th anniversary model is the ultimate performance cruiser from Nautor's Swan. Conceived to provide a genuine performance cruising solution, it encompasses modern design, new materials and state of the art production to find a perfect balance between performance and comfort.

Designed by German Frers, the Swan 66 has a canoe body with large volume, offering a spacious interior constructed using the latest design technology and high tech materials.

Available in Flush Deck (FD) and Semi Raised (S) saloon versions, the Swan 66 offers various design configurations, including two keel versions and two different deck and interior layouts. This gives the customer the opportunity to tailor their Swan 66 into a comfortable cruising yacht or a more performance orientated, competitive boat.



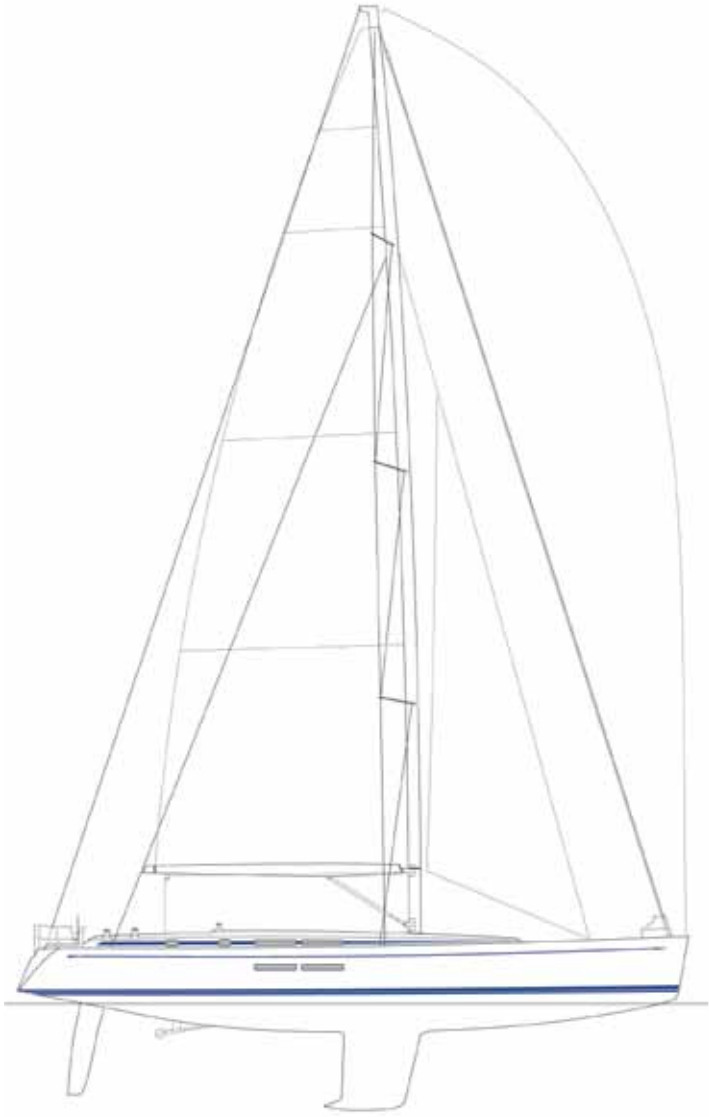


SWAN66 FD

SWAN 66 FD

Image Gallery

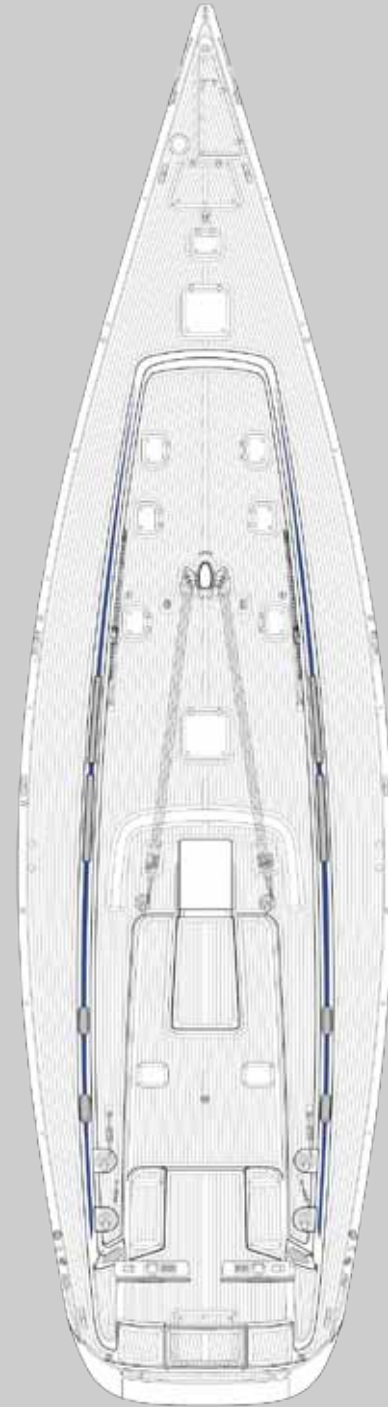




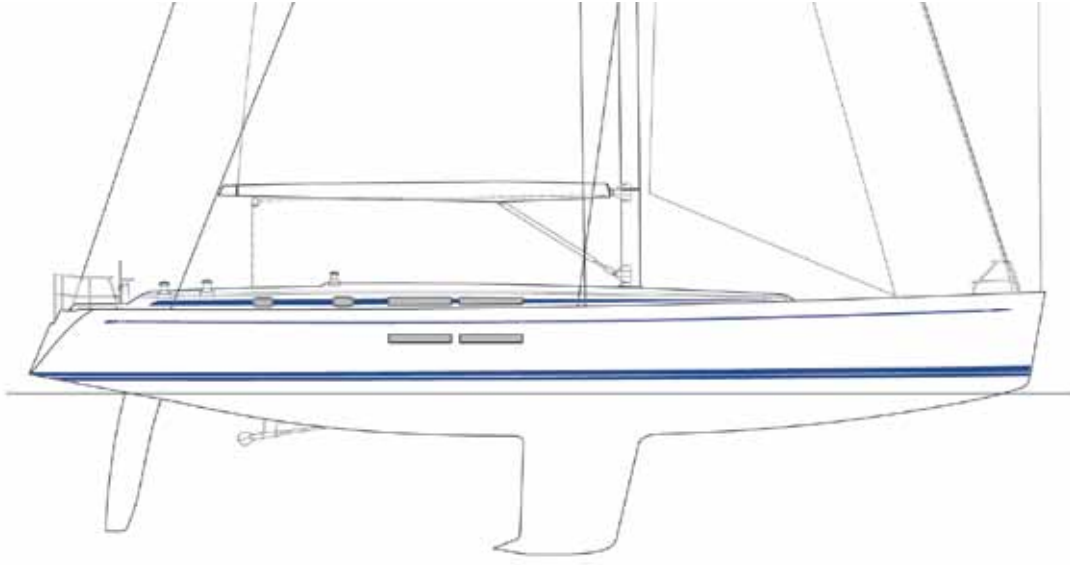
The deck layout has been carefully designed to allow for easy sail handling and good protection from the elements.

The top sides are composite sandwich construction, with carbon fibre reinforcements for a lighter, stiffer hull in addition to better sound and heat insulation. The structural design of the hull incorporates important collision safety aspects, with the structural bulkheads made from carbon fibre to ensure maximum stiffness.

The underwater section is coated in a single skin laminate, which provides optimal impact resistance.



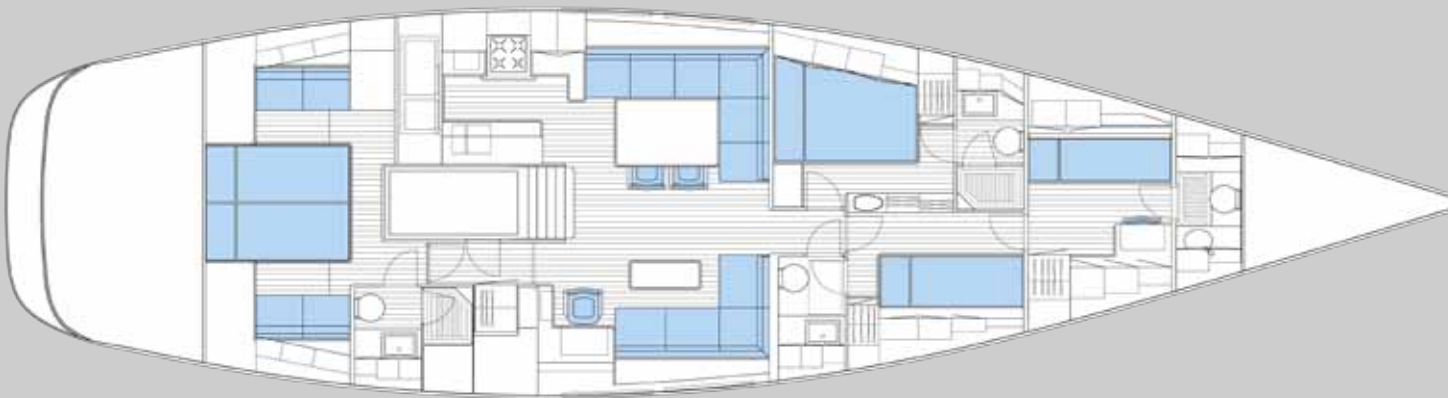




The teak joinery is complimented by a subtle styling and white surfaces throughout, allowing for a truly modern, spacious, functional and bright interior.

The hull windows in the saloon create a spacious and bright living area.

Two different layouts are available: one on the Flush Deck version with the owner cabin aft with a two cockpit deck configuration and the other on the Semi-raised saloon with the owner cabin forward, with a one cockpit layout.



SWAN 66 FD

Image Gallery



GENERAL

FD

Length overall:	66.01 ft	20.12 m
Length of waterline:	56.40 ft	17.19 m
Beam:	17.68 ft	5.39 m
Draught (light):	10.5 ft	3.2 m
Ballast:	20720 lbs	9400 kg
Displacement (light):	66000 lbs	30000 kg

TECHNICAL SPECIFICATION

Fuel:	211 US gal	800 ltr
Water:	264 US gal	1000 ltr
Hot water:	19.8 US gal	75 ltr
DC Power:	24 V	600 Ah
AC Power:	11.9 kVA	230 V 50 Hz
Shore Power:	11.5 kVA	230 V 50 A
Airconditioning:	50000 BTU	14.5 Kw
Engine - Steyr:	163 HP	120 Kw

RIG AND SAIL DIMENSIONS

IG:	90.22 ft	27.50 m
J:	24.44 ft	7.45 m
P:	82.84 ft	25.25 m
E:	24.93 ft	7.60 m

SAIL AREAS

Fore triangle:	1102.6 sq.ft	102.4 m ²
Mainsail:	1308.9 sq.ft	121.6 m ²
Jib:	1026.9 sq.ft	95.4 m ²

CLASSIFICATION

CE Category: A Ocean

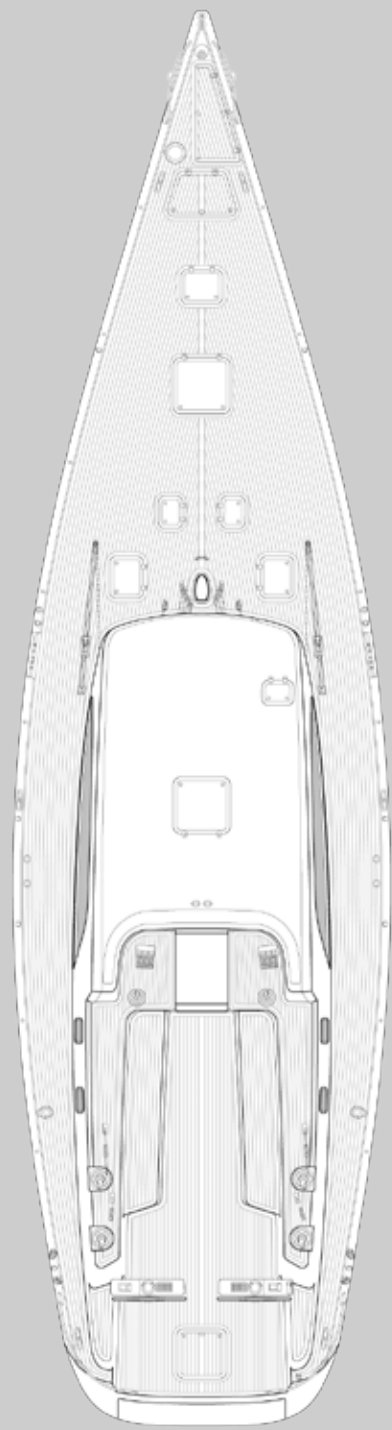
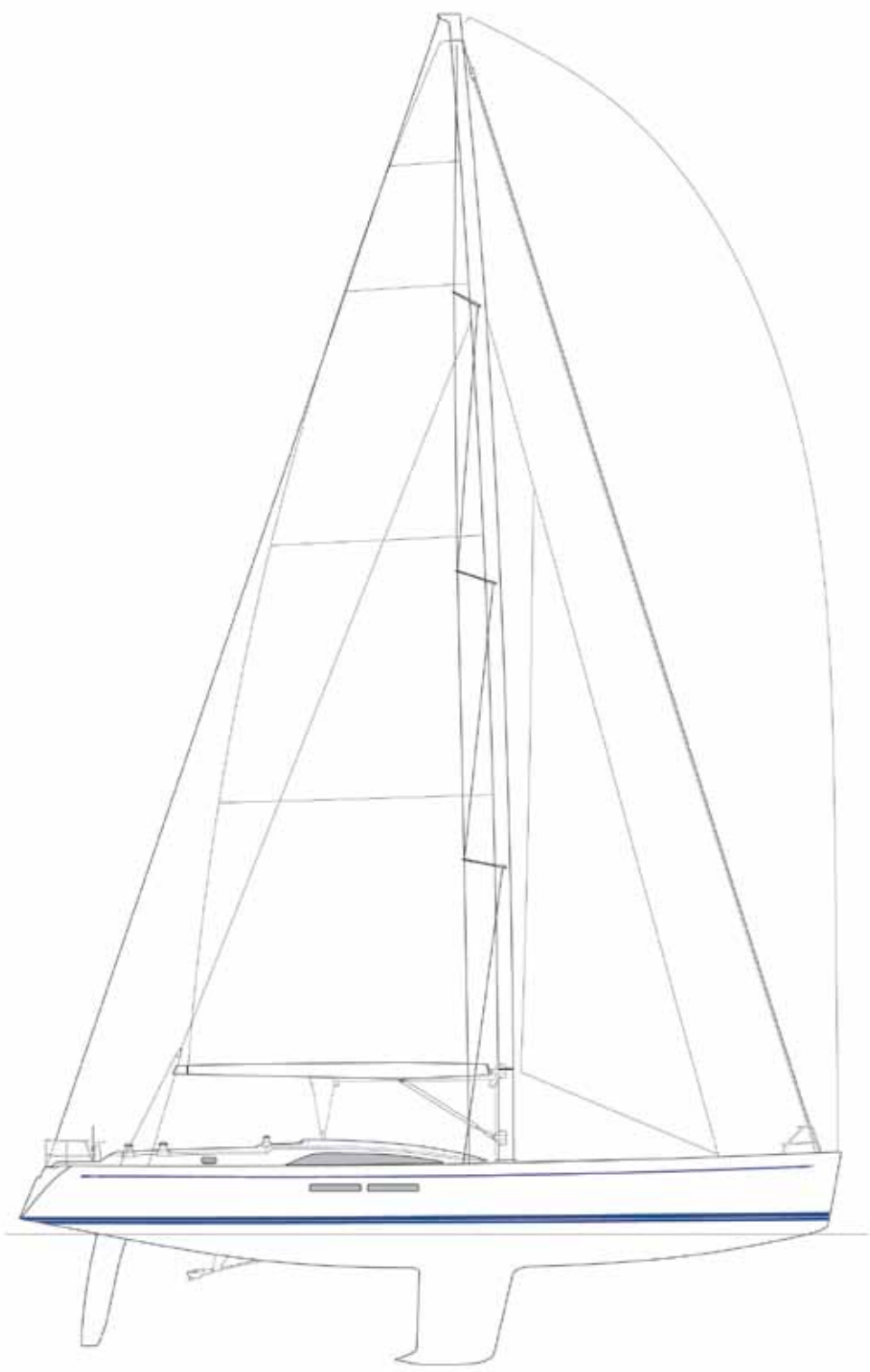


SWAN 66 S

SWAN 66 S

Image Gallery

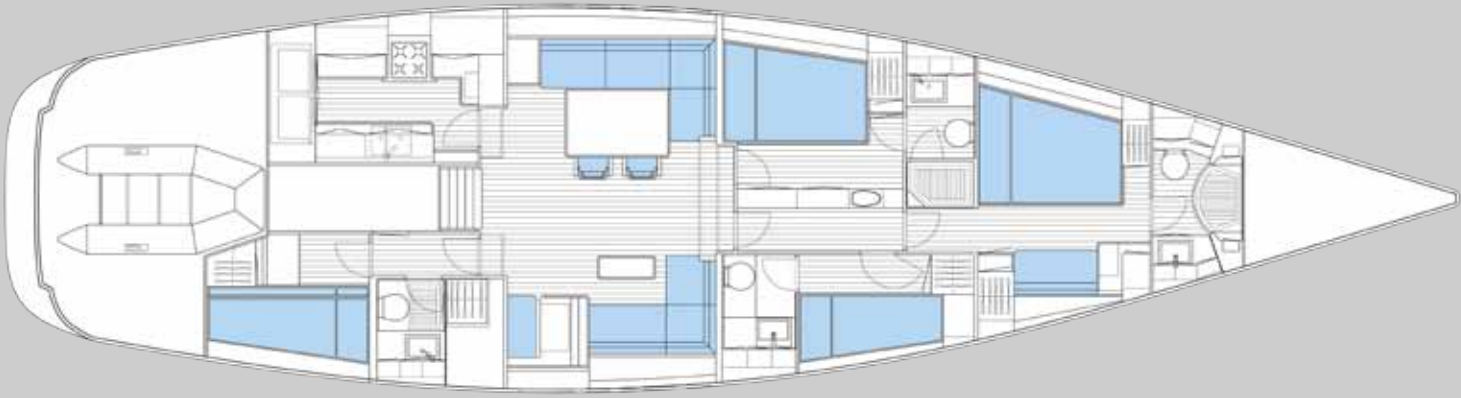




SWAN 66 S

Deck & Sail Plan





SWAN 66 S

Interiors



GENERAL

S

Length overall:	66.01 ft	20.12 m
Length of waterline:	56.40 ft	17.19 m
Beam:	17.68 ft	5.39 m
Draught (light):	10.5 ft	3.2 m
Ballast:	20720 lbs	9400 kg
Displacement (light):	66000 lbs	30000 kg

TECHNICAL SPECIFICATION

Fuel:	343 US gal	1300 ltr
Water:	330 US gal	1250 ltr
Hot water:	19.8 US gal	75 ltr
DC Power:	24 V	600 Ah
AC Power:	11.9 kVA	230 V 50 Hz
Shore Power:	11.5 kVA	230 V 50 A
Airconditioning:	50000 BTU	14.5 Kw
Engine - Steyr:	163 HP	120 Kw

RIG AND SAIL DIMENSIONS

IG:	90.22 ft	27.50 m
J:	24.44 ft	7.45 m
P:	82.68 ft	25.20 m
E:	24.93 ft	7.60 m

SAIL AREAS

Fore triangle:	1102.6 sq.ft	102.4 m ²
Mainsail:	1308.9 sq.ft	121.6 m ²
Jib:	1026.9 sq.ft	95.4 m ²

CLASSIFICATION

CE Category: A Ocean

This catalogue contains non-contractual descriptive information about Nautor's Swan yachts including drawings, photographs as well as other data. All such information is subject to change at any time without prior notice and does not represent an exact description of any particular yacht. Photos or diagrams could include special equipment that is not part of the equipment supplied by the boatyard. All the information, figures, photographs and data provided in this catalogue are exclusive copyright, industrial property right and property of Nautor's Swan.



Nautor's Swan
Borgo SS. Apostoli, 29
50123 Firenze, Italy

Phone: +39 055 240382
www.nautorswan.com
info@nautorswan.com